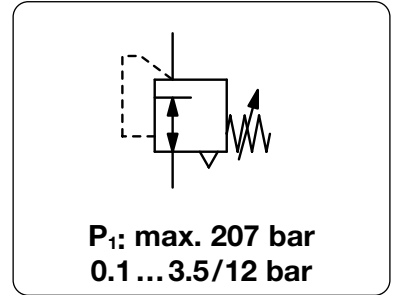


Description	Diaphragm-operated high pressure regulator made of brass .		
Media	compressed air, nitrogen, helium, krypton, carbon dioxide, neon, xenon		
Supply pressure	max. 207 bar		
Adjustment	by slotted screw with locknut		
Relieving function	standard, optionally non-relieving		
Connection thread	¼" NPT, two high pressure inlet ports and two regulated pressure outlet ports.		
Mounting position	any		
Temperature range	-34 °C to 60 °C / -29.2 °F to 140 °F		
Material	Body: brass	Diaphragm: NBR/Buna-N and acetal	Seals: NBR/Buna-N
	Spring cage: zinc die-cast	Valve seat: teflon, brass and stainless steel	



Dimensions			K _v -value (m ³ /h)	Flow rate		Connection thread NPT	Pressure range bar	Order number
A	B	C		m ³ /h*1	l/min*1			

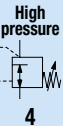
High pressure regulator 207 bar				for compressed air, relieving made of brass, NBR/Buna-N		RH83		
48	110	10	0.02	19.2	320	¼" NPT	0.1 ... 3.5	RH83-02A
							0.3 ... 8.5	RH83-02B
							0.7 ... 12	RH83-02C

Special options, add the appropriate letter

non-relieving	without relieving function	RH83-02. K
carbon dioxide	CO ₂	RH83-02. K03
argon	Ar	RH83-02. K05
nitrogen	N ₂	RH83-02. K07
helium	He	RH83-02. K09
inert gas	krypton, neon, xenon	RH83-02. K31

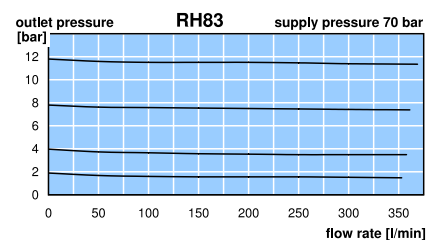
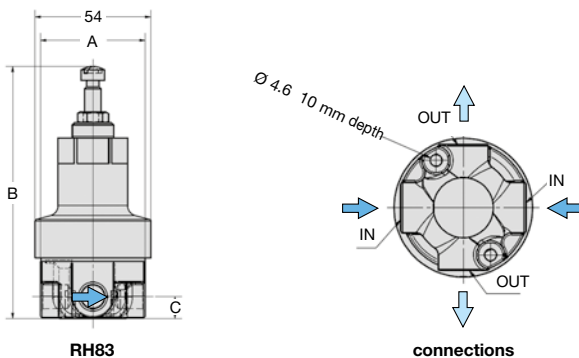


RH83



Accessories, enclosed

pressure gauge	Ø 50 mm, ¼" NPT	MA5002- ..*N
----------------	-----------------	--------------



*1 bei P₁ = 70 bar, P₂ = 4 bar und Δp = 0.35 bar

*2 04 = 0...4 bar, 11 = 0...11 bar, 16 = 0...16 bar